

UNIT #1
 BASEMENT = 237 G.S.F.
 1ST FLOOR = 1102 G.S.F.
 PATIO AREA = 97 S.F.
 TOTAL = 1436 G.S.F.

UNIT #2
 BASEMENT = 150 G.S.F.
 2ND FLOOR = 1156 G.S.F.
 TOTAL = 1306 G.S.F.

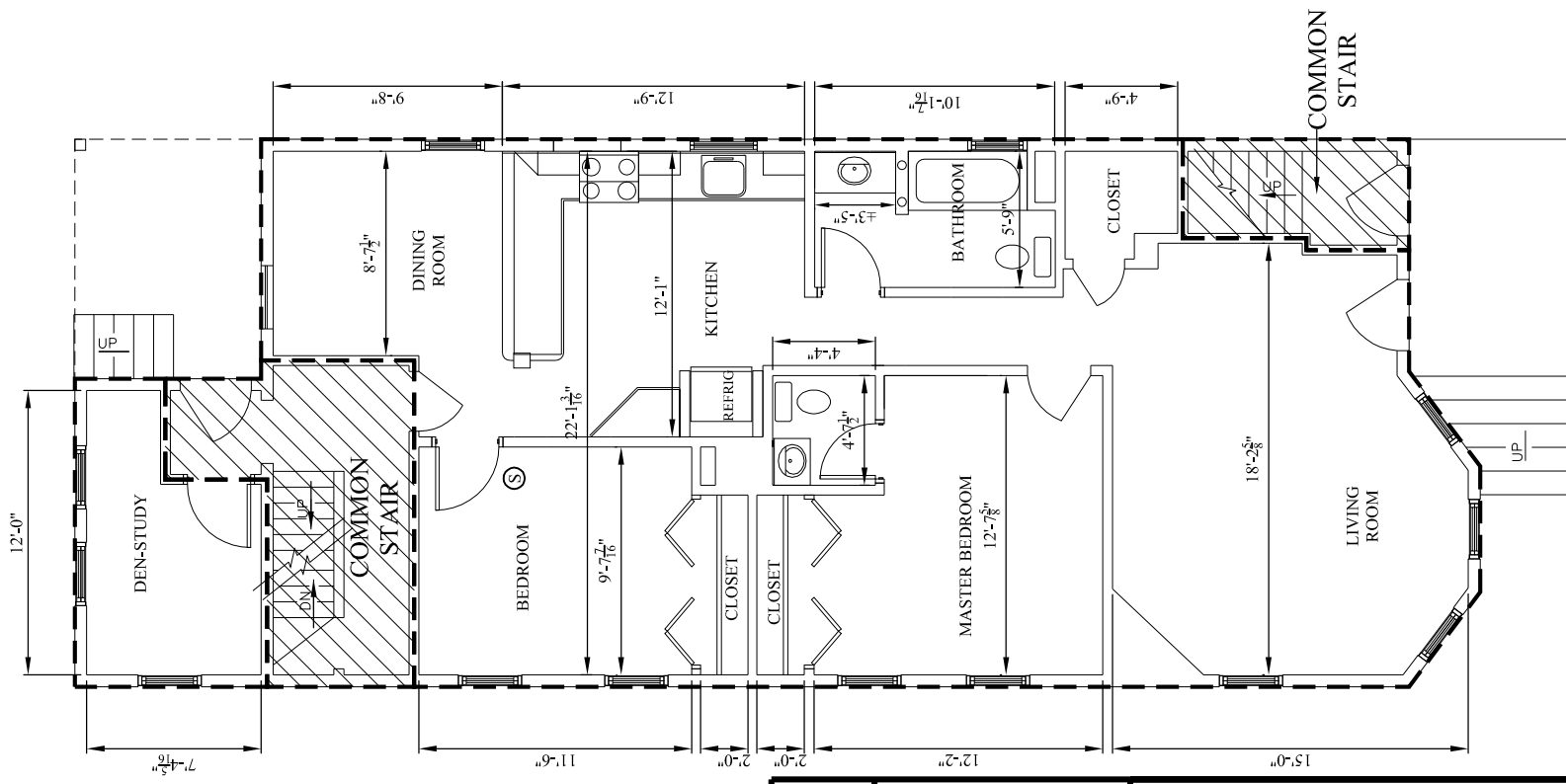
UNIT #3
 BASEMENT = 164 G.S.F.
 2ND FLOOR = 1205 G.S.F.
 TOTAL = 1369 G.S.F.

COMMON
 BASEMENT = 625 G.S.F.
 1ST FLOOR = 146 G.S.F.
 2ND FLOOR = 171 G.S.F.
 3RD FLOOR = 122 G.S.F.
 TOTAL = 1064 G.S.F.

TOTAL BUILDING = 5175 G.S.F.

TITLE REF: BK. _____ PAGE _____

CONDOMINIUM PLANS
 FOR THE
 65 OAK STREET CONDOMINIUMS
 65 OAK STREET
 SOMERVILLE, MASS.
 (MIDDLESEX COUNTY)
 FOR REGISTRY USE



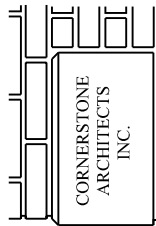
FIRST FLOOR PLAN

FIRST FLOOR AREA:
 UNIT #1 = 1102 G.S.F.
 COMMON = 146 G.S.F.
 TOTAL = 1248 G.S.F.

I HEREBY CERTIFY THAT THIS PLAN FULLY AND ACCURATELY DEPICTS THE LAYOUT, LOCATION, UNIT NUMBERS AND DIMENSIONS OF THE UNITS AS BUILT.
 I HERBY CERTIFY THAT THE PROPERTY LINES SHOWN ARE THE LINES DIVIDING EXISTING OWNERSHIPS AND THE LINES OF STREETS AND WAYS SHOWN ARE THOSE OF PUBLIC OR PRIVATE STREETS AND WAYS ALREADY ESTABLISHED AND NO NEW LINES FOR THE DIVISION OF EXISTING OWNERSHIPS OR FOR NEW WAYS ARE SHOWN.
 I HERBY CERTIFY THAT THIS PLAN FULLY AND ACCURATELY DEPICTS THE LOCATION AND DIMENSIONS OF THE BUILDING KNOWN AS 65 OAK STREET CONDOMINIUM" AS-BUILT AND FULLY LIST THE UNITS CONTAINED THEREIN.
 I HERBY CERTIFY THAT THIS PLAN HAS BEEN PREPARED IN CONFORMITY WITH THE RULES AND REGULATIONS OF THE REGISTERS OF DEEDS OF THE COMMONWEALTH OF MASSACHUSETTS.

CHARLES COCHRAN - ARCHITECT

DATE:



PREPARED BY:
 CORNERSTONE ARCHITECTS INC.
 46 Augusta Way - N. Chelmsford, Ma 01863
 P - 978-251-0518

1ST FLOOR PLAN - UNIT #1
 65 OAK STREET
 SOMERVILLE, MA

Job No.	1564
Date	06-24-16
Scale	1/8" = 1'-0"
Drawing No.	C-2.1